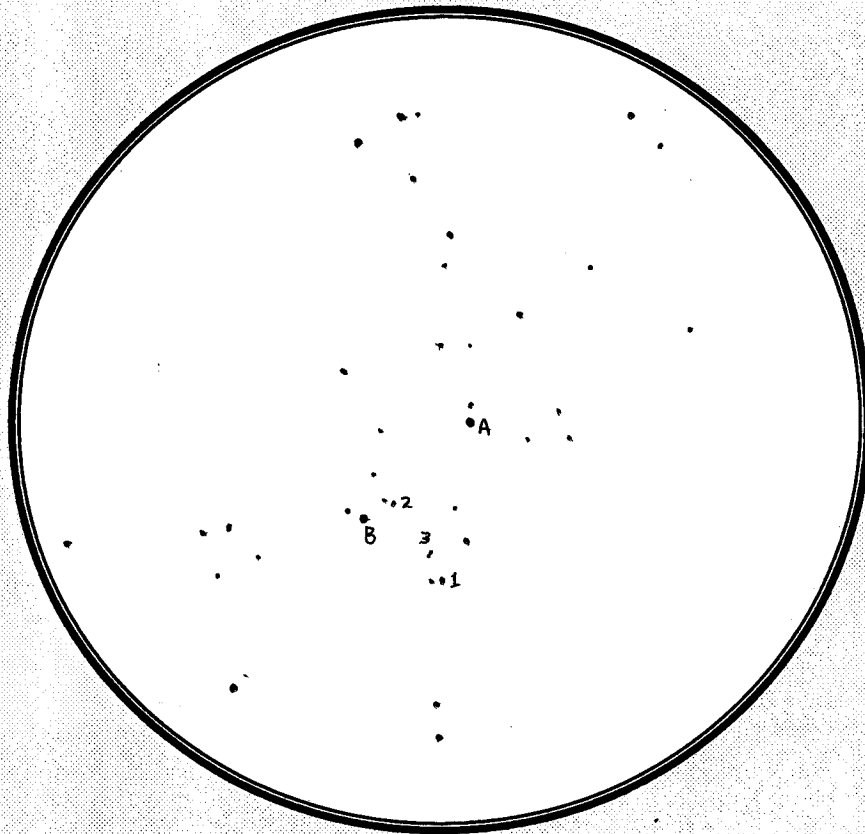


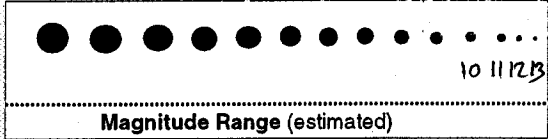
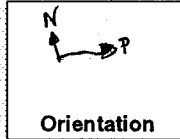
20002

Date: Oct 2

Object: Cr 463  
 Type: OC  
 Constellation: CAS



- 10" 15.6
- 12" 14.5
- 4mm = 356x
- 5mm = 284x
- 6mm = 237x
- 7mm = 203x
- 7.5mm = 190x
- 8mm = 178x
- 10mm = 142x
- 12mm = 119x
- 12.5mm = 114x
- 18mm = 79x
- 20mm = 71x
- 25mm = 57x
- 32mm = 44x
- 40mm = 36x



Time:	12:58 - 1:20 A CST	Site:	<del>Cross Hills Star Party</del> Sleaford Obs
Telescope:	✓ 10" 1/5.6 12.5" 1/4.5	Eye-piece:	32 mm Magnif. 44 X
Seeing:	5/10	Accuracy:	Good
Temp:	~ 0 °C	Dew:	v. lt
Filter:	—	Aurora:	great jobs
		Moon:	—
		Wind:	—

Notes:

- A very interesting open cluster - dim & not well-separated from background. However, certainly worth re-examining under a better sky. The dew made in vibr. aurora & clouded out at 1:20 AM, before all stars on L & R sides & A stars interior could be plotted.
- At least 3 doubles #1-11, 12, 12"; #2-13, 13, 12"; #3-13, 13, 3"
- Stars A & B may be yellow. Colours in other stars indistinct.

10 stars in ✓ Uranometria — Millennium Map #17 Sky & poor.

page no: 6367